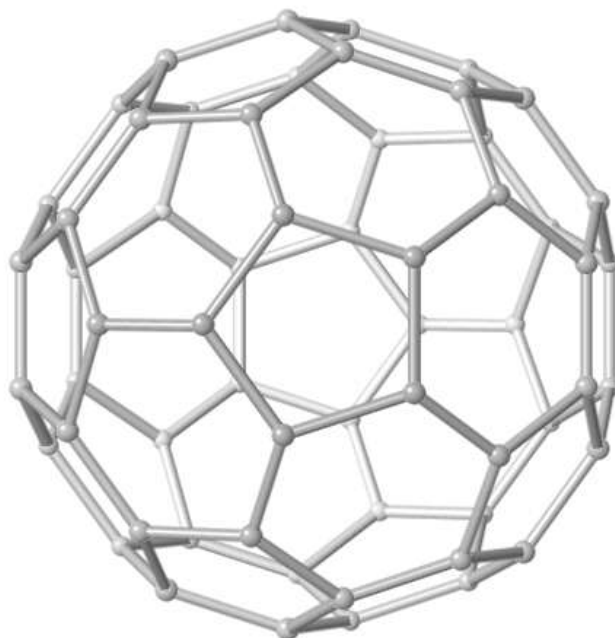


Steffen Weber's

Crystallography Picture Book

Fullerenes



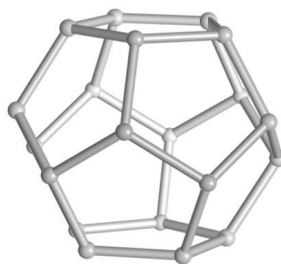
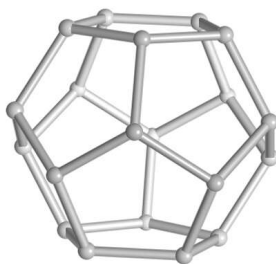
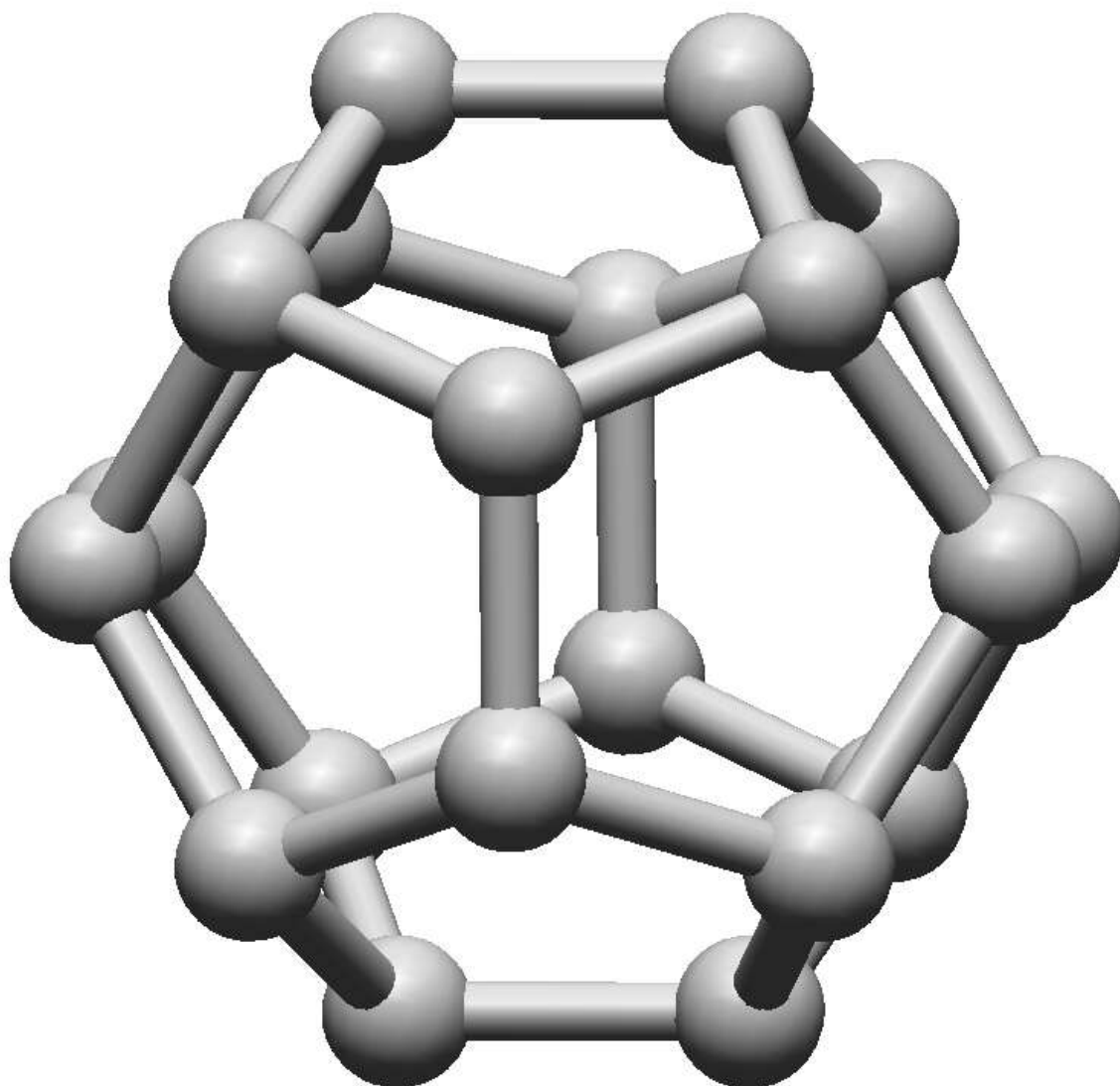
Preface

This is the second volume in the series of picture books that I am creating for educational purposes. All images in this volume were created using the program *NanotubeModeler* from JCrystalSoft and for the stereo views the program MDISV was used, which is included with JPOWD from MDI (www.materialsdata.com). A free version of *NanotubeModeler* program can be downloaded at www.jcrystal.com. My earliest implementation of routines for the visualization of fullerenes was realized in JSV (Java Structure Viewer), a program which I wrote while working at NIRIM in Japan. This year I wrote *NanotubeModeler* as a stand-alone Windows application. This program can read and display the data files of M. Yoshida's Fullerene library.

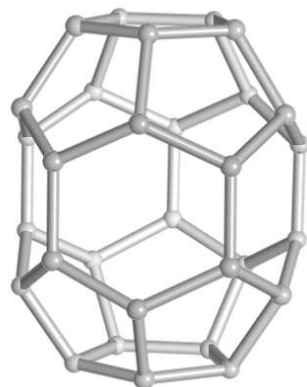
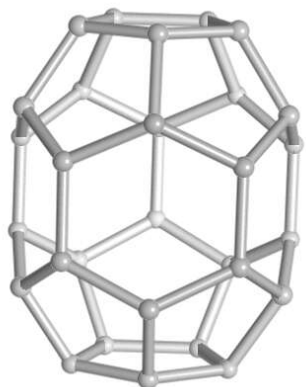
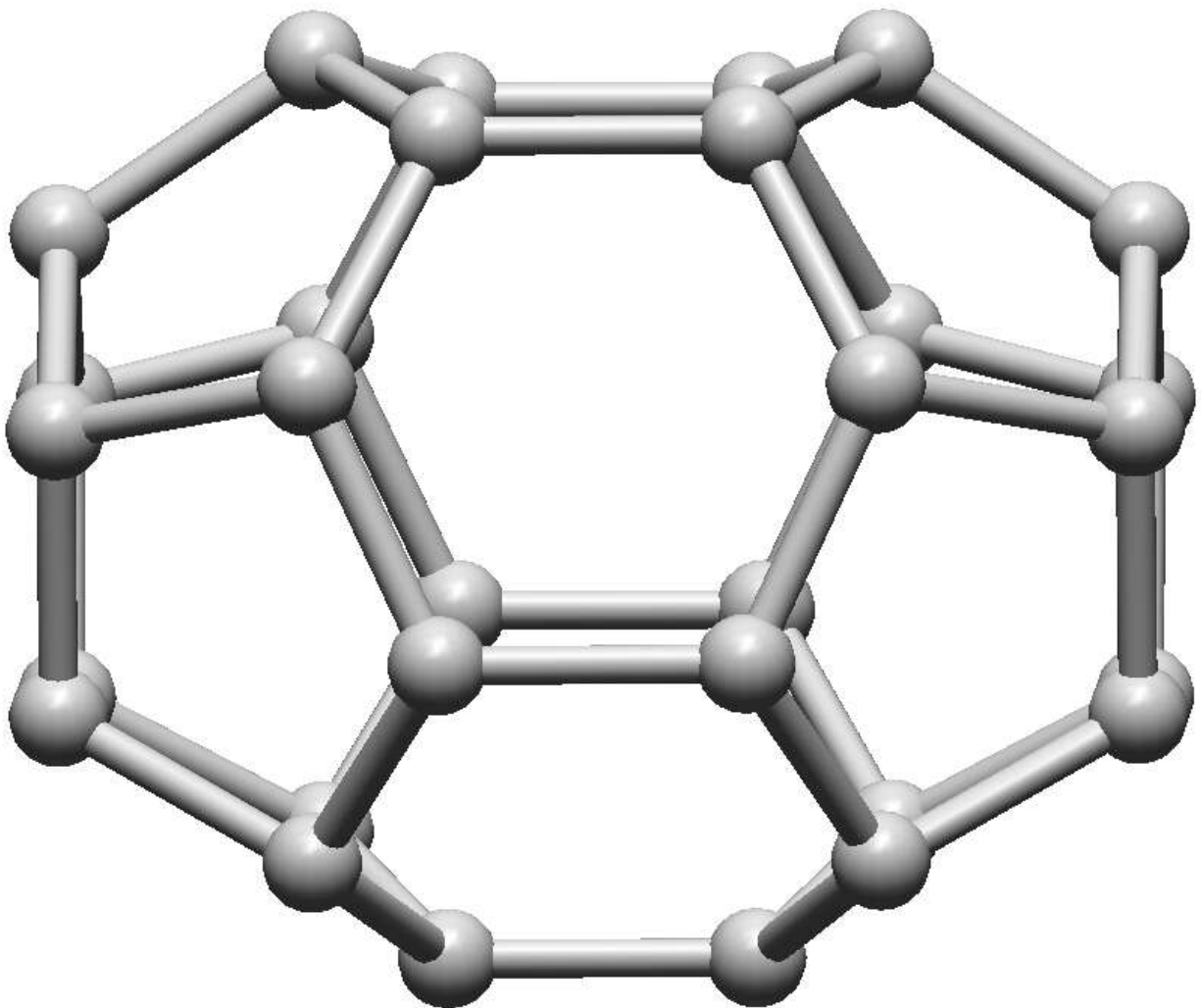
*All xyz-data files used here were downloaded from M. Yoshida's website at:
www.cochem2.tutkie.tut.ac.jp/Fuller/Fuller.html*

*Steffen Weber, Ph.D.
December 11, 2004
Livermore, California
www.jcrystal.com/steffenweber*

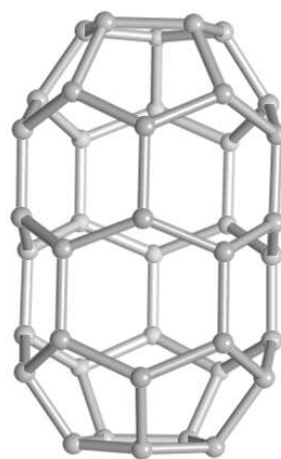
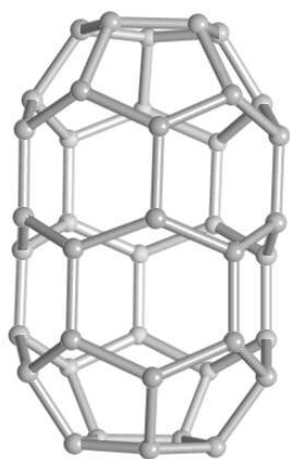
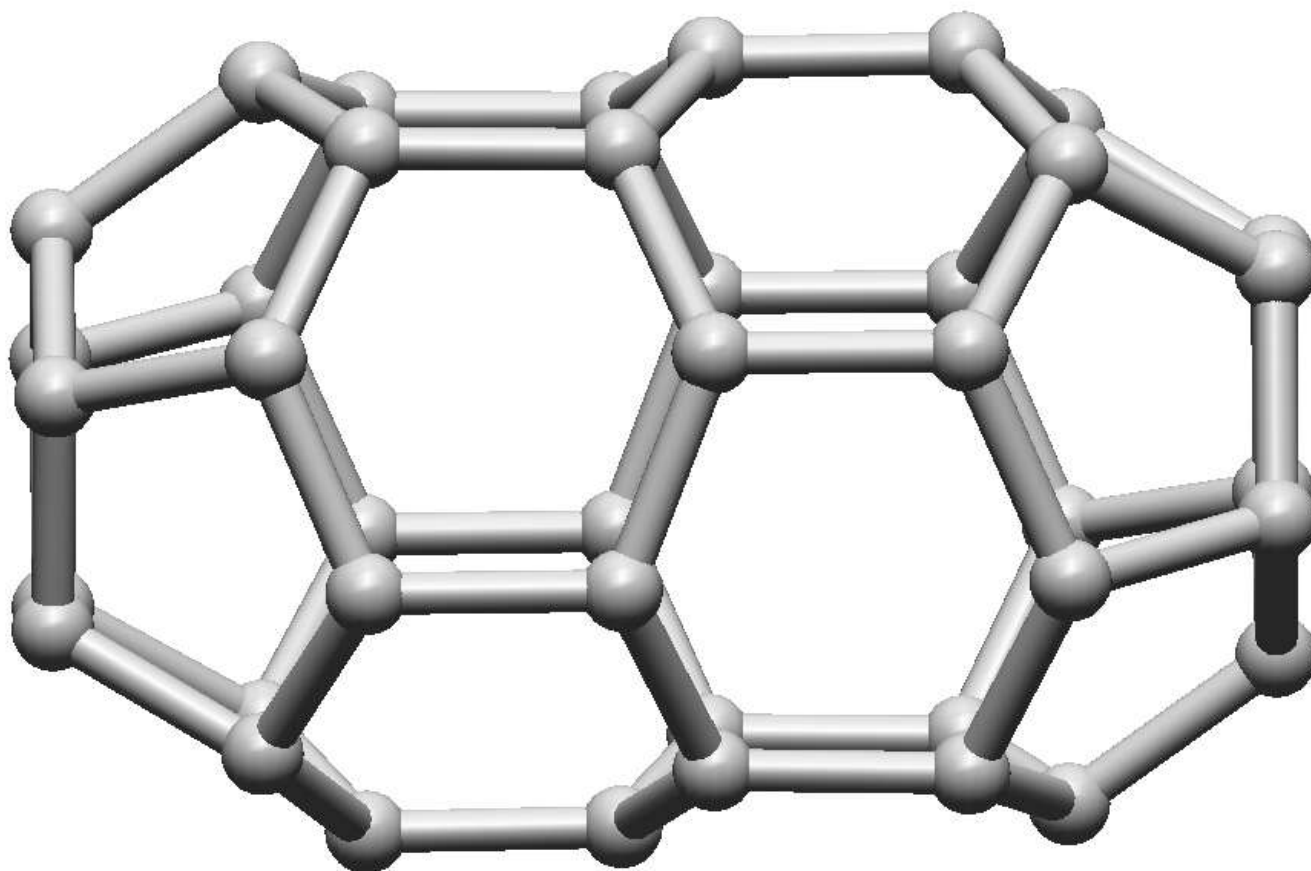
C_{20} (C_{20ih})



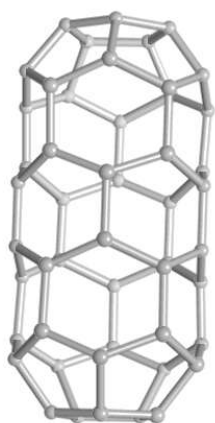
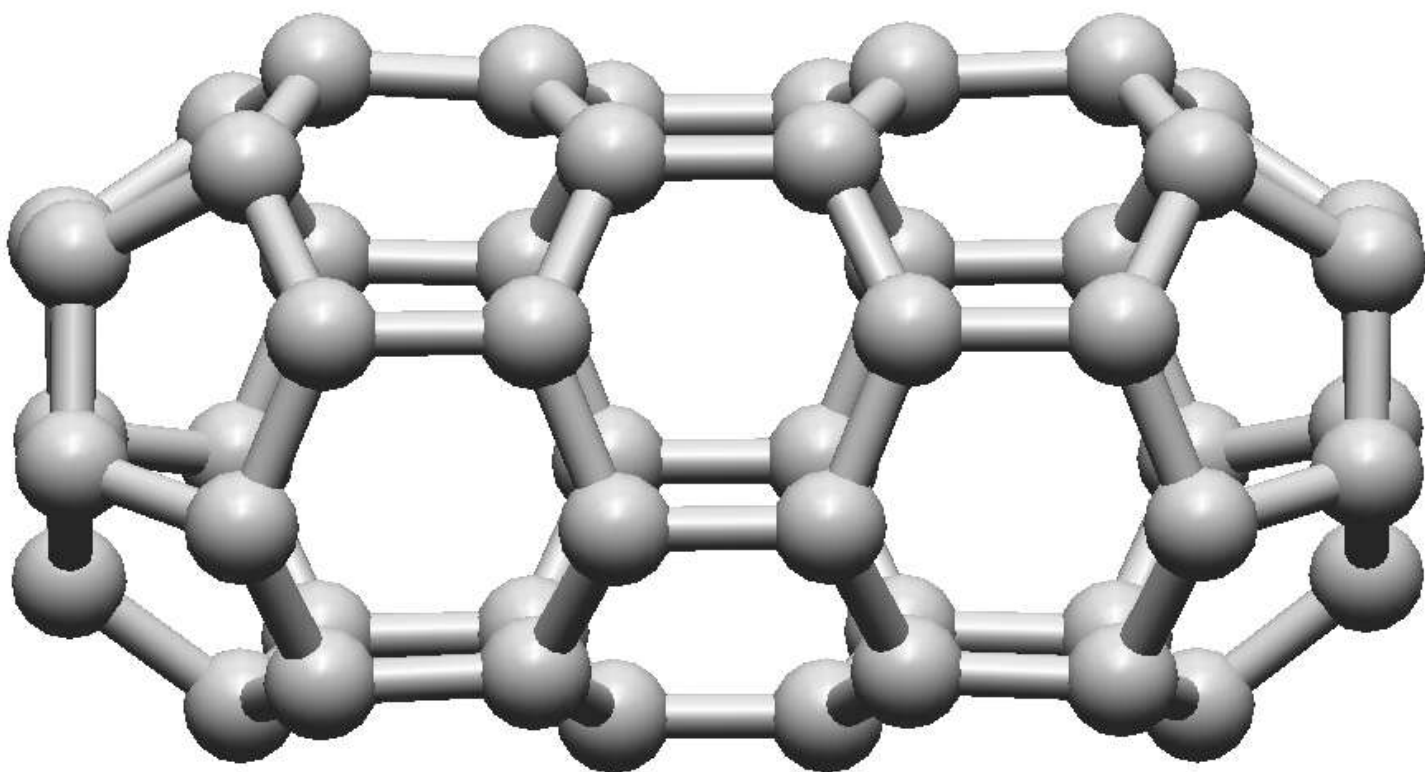
C30 (*C30-1*)



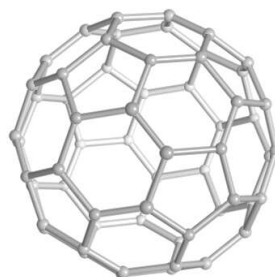
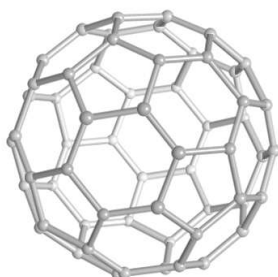
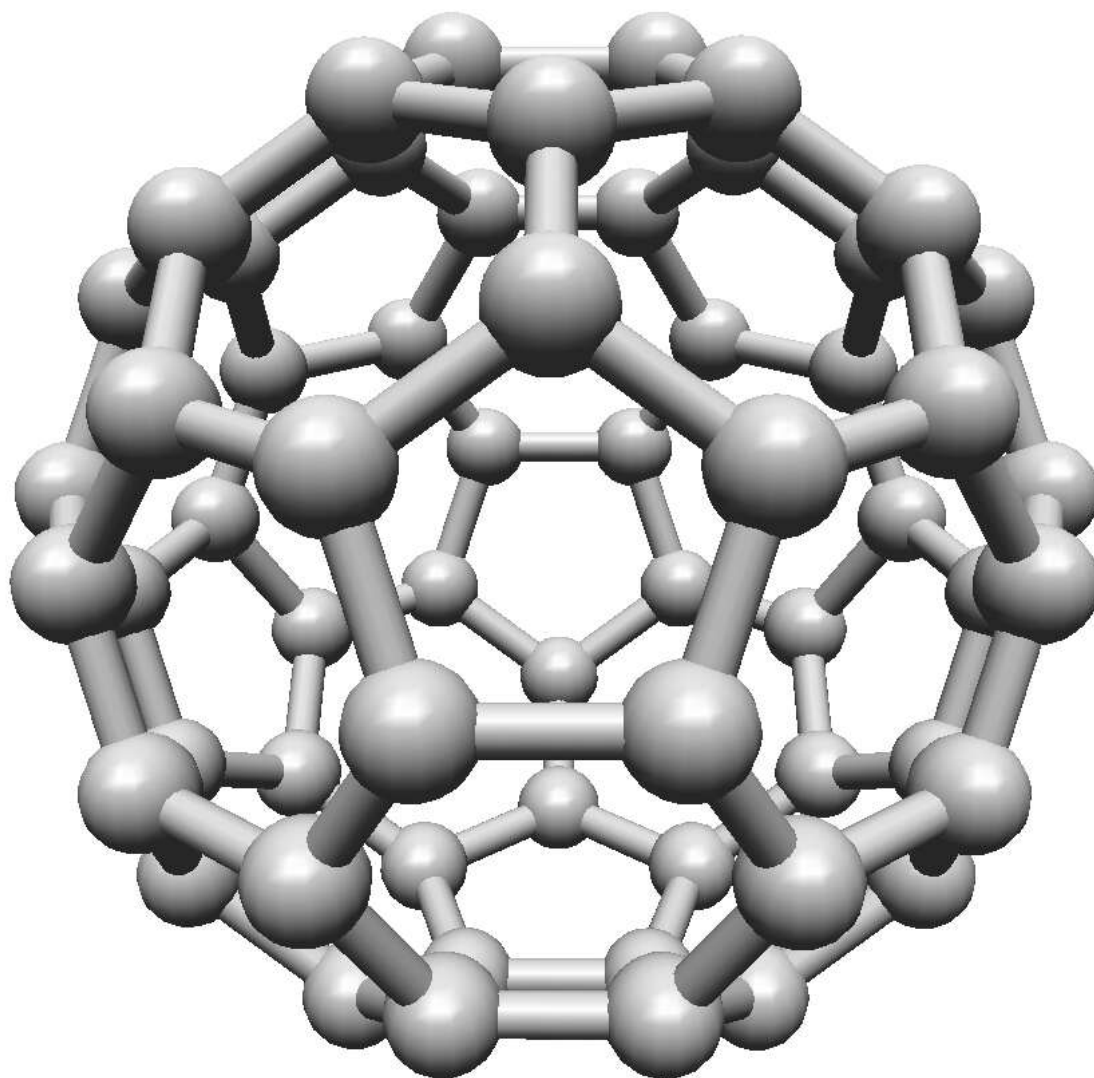
C₄₀ (No.1-D5d)



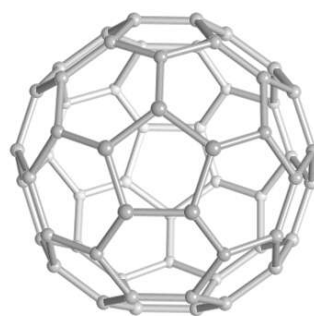
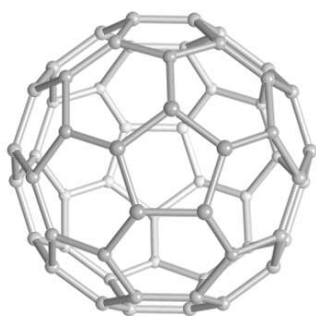
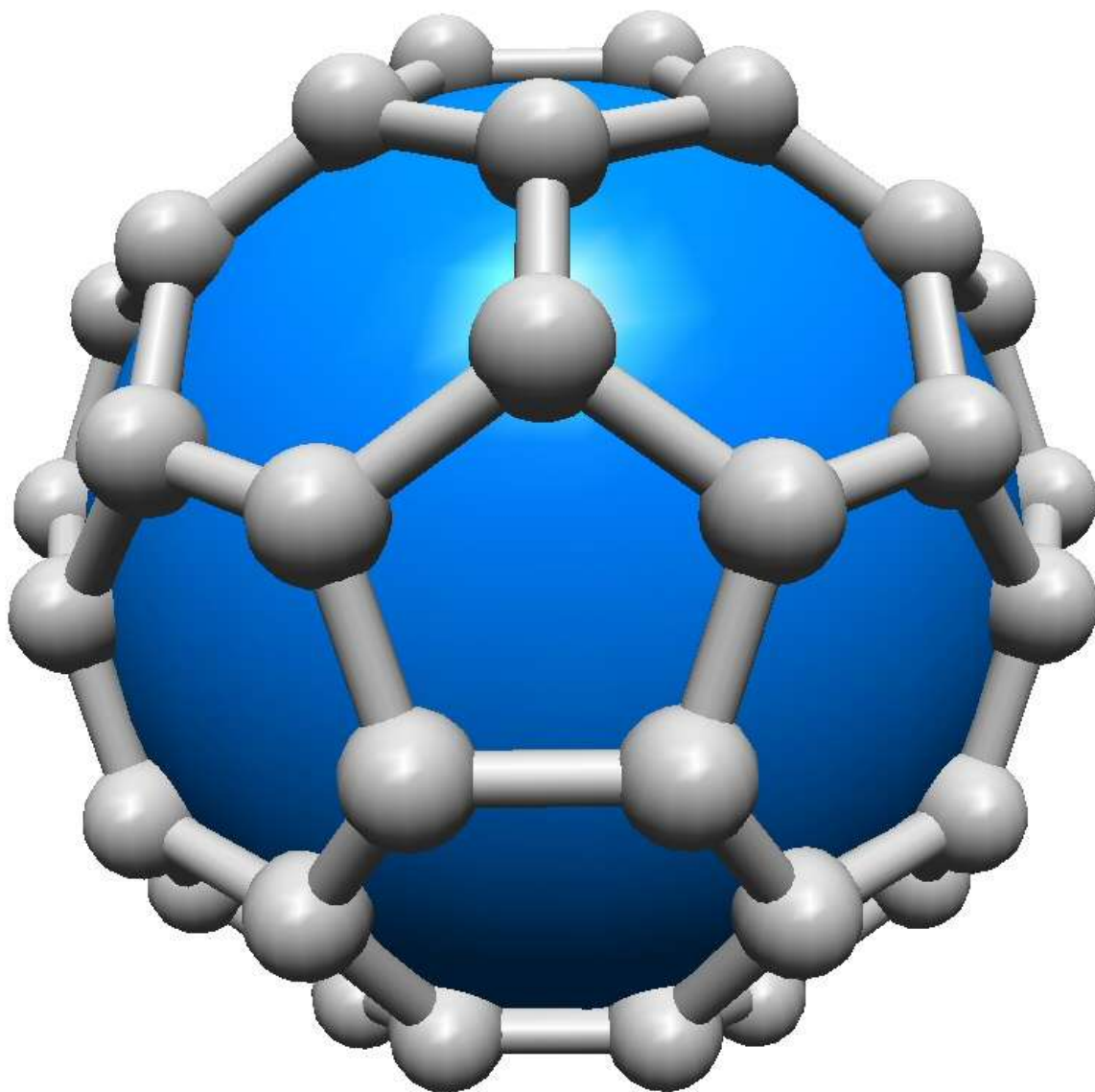
C50 (No.1-D5h)



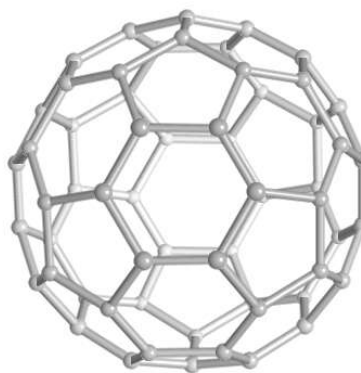
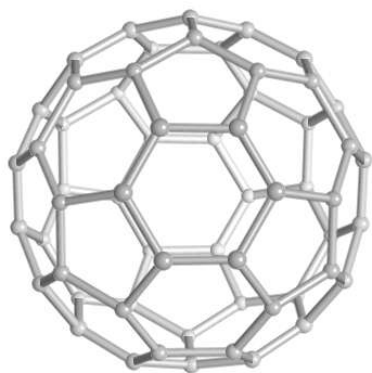
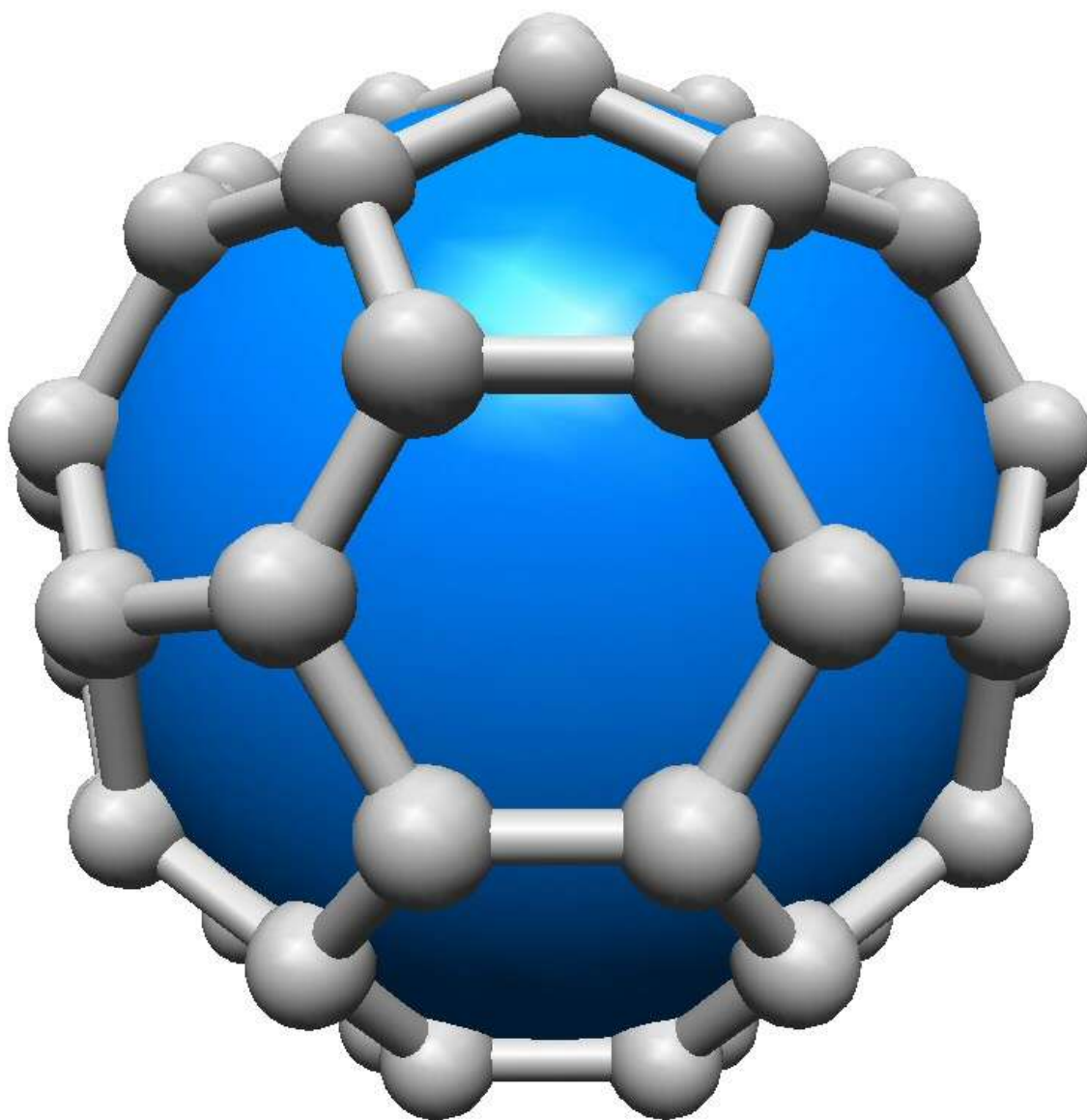
C60 (*Buckyball*)



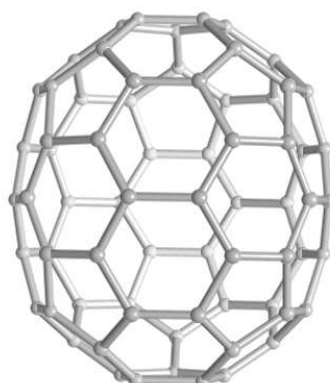
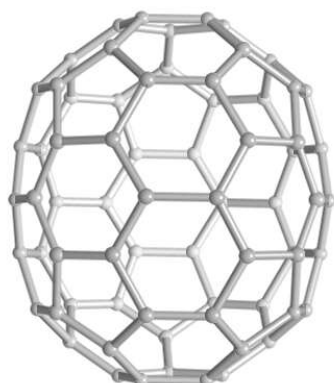
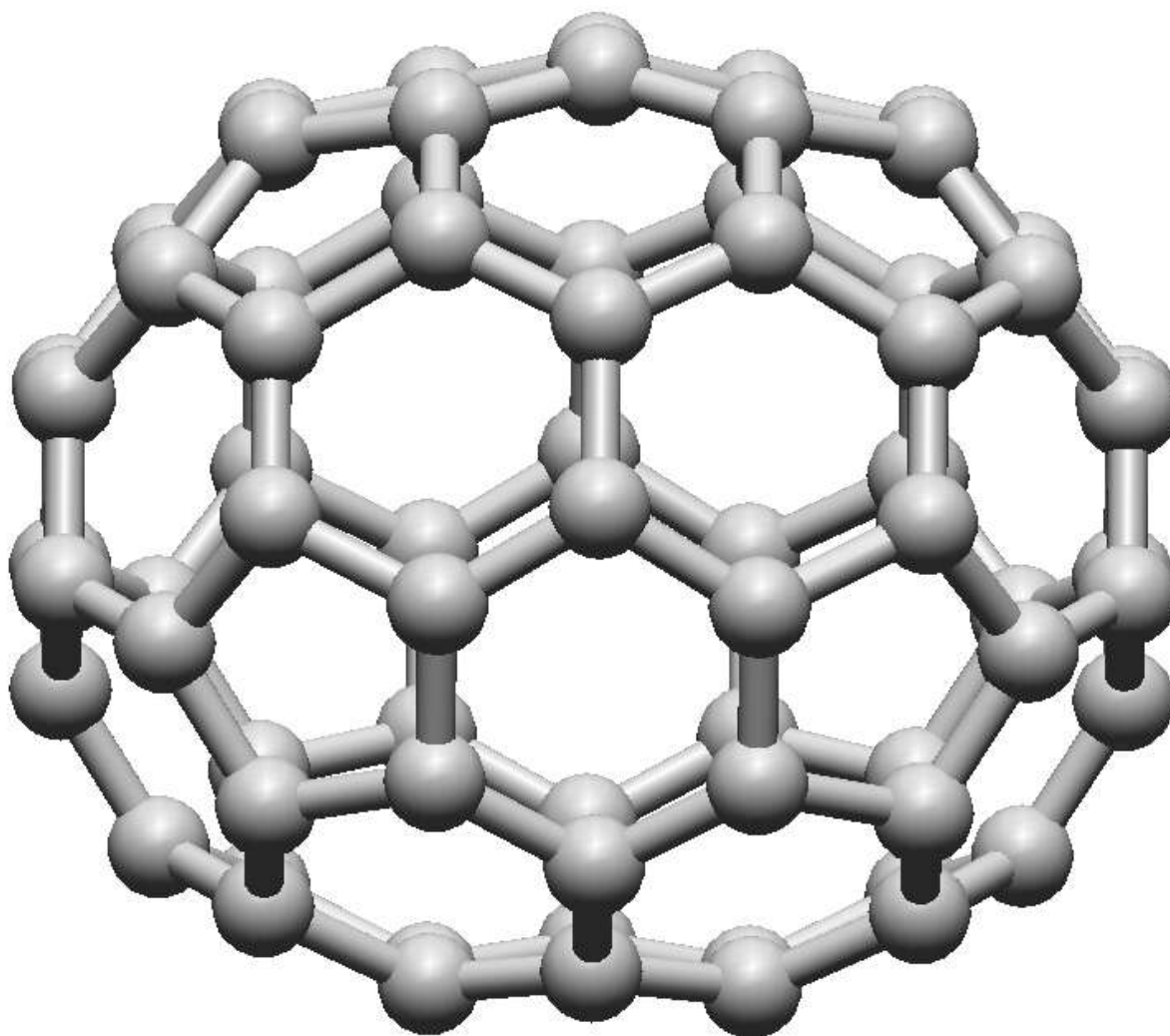
C60 (5-fold axis)



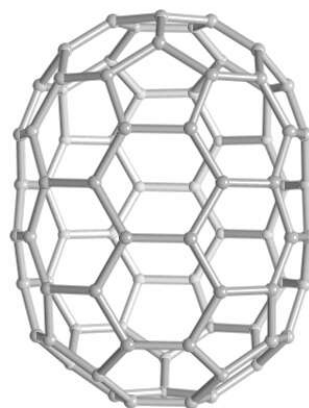
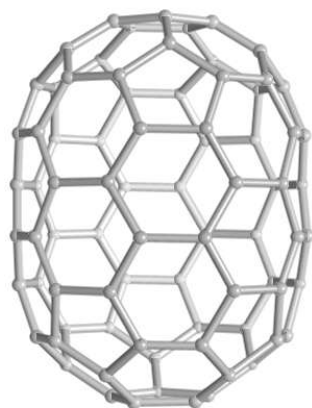
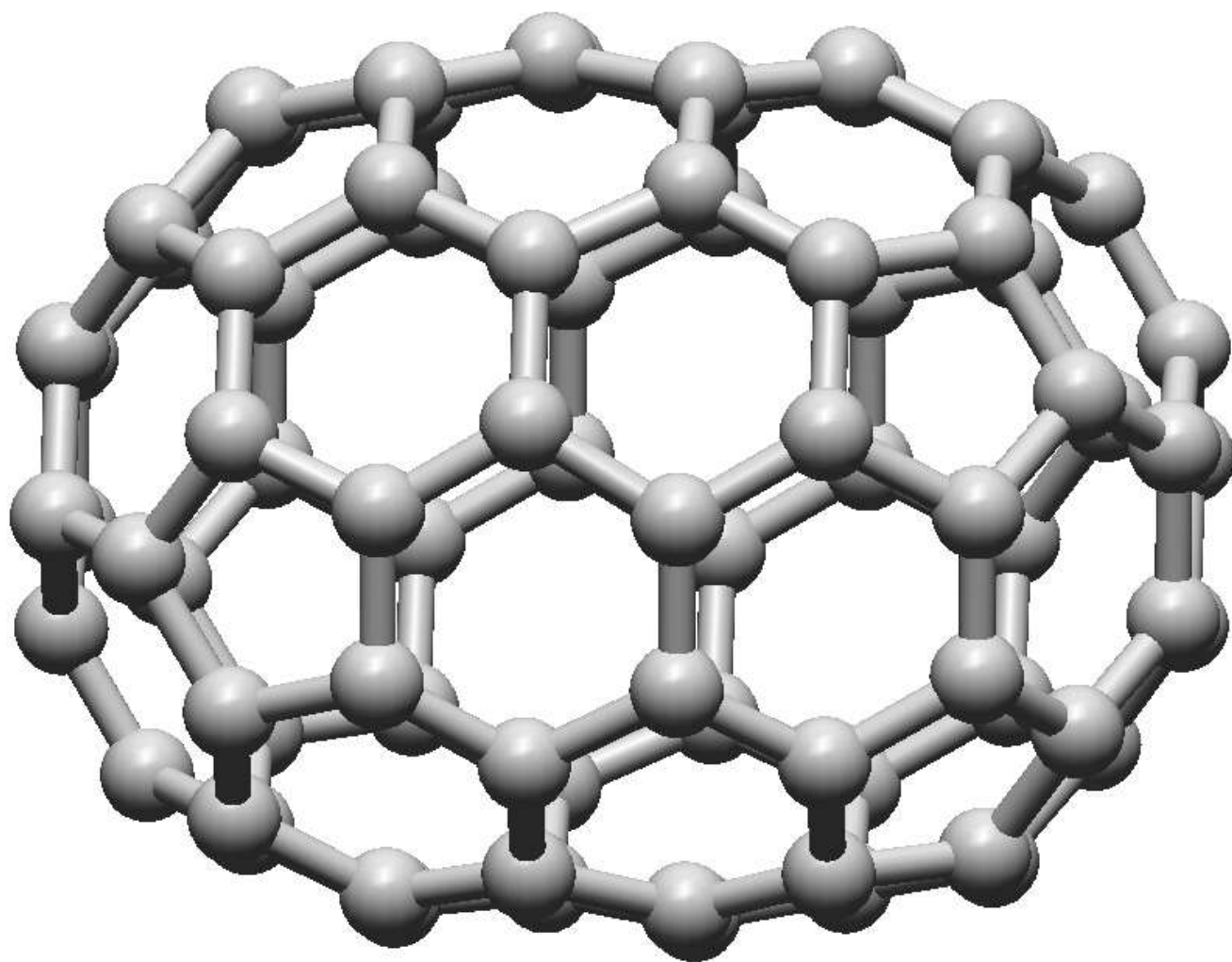
C60 (6-fold axis)



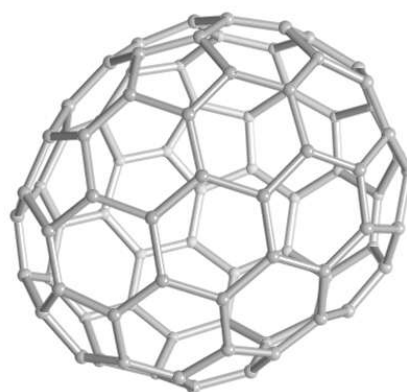
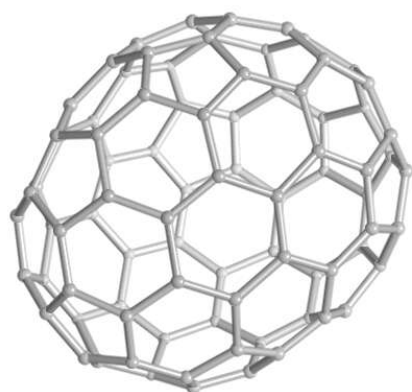
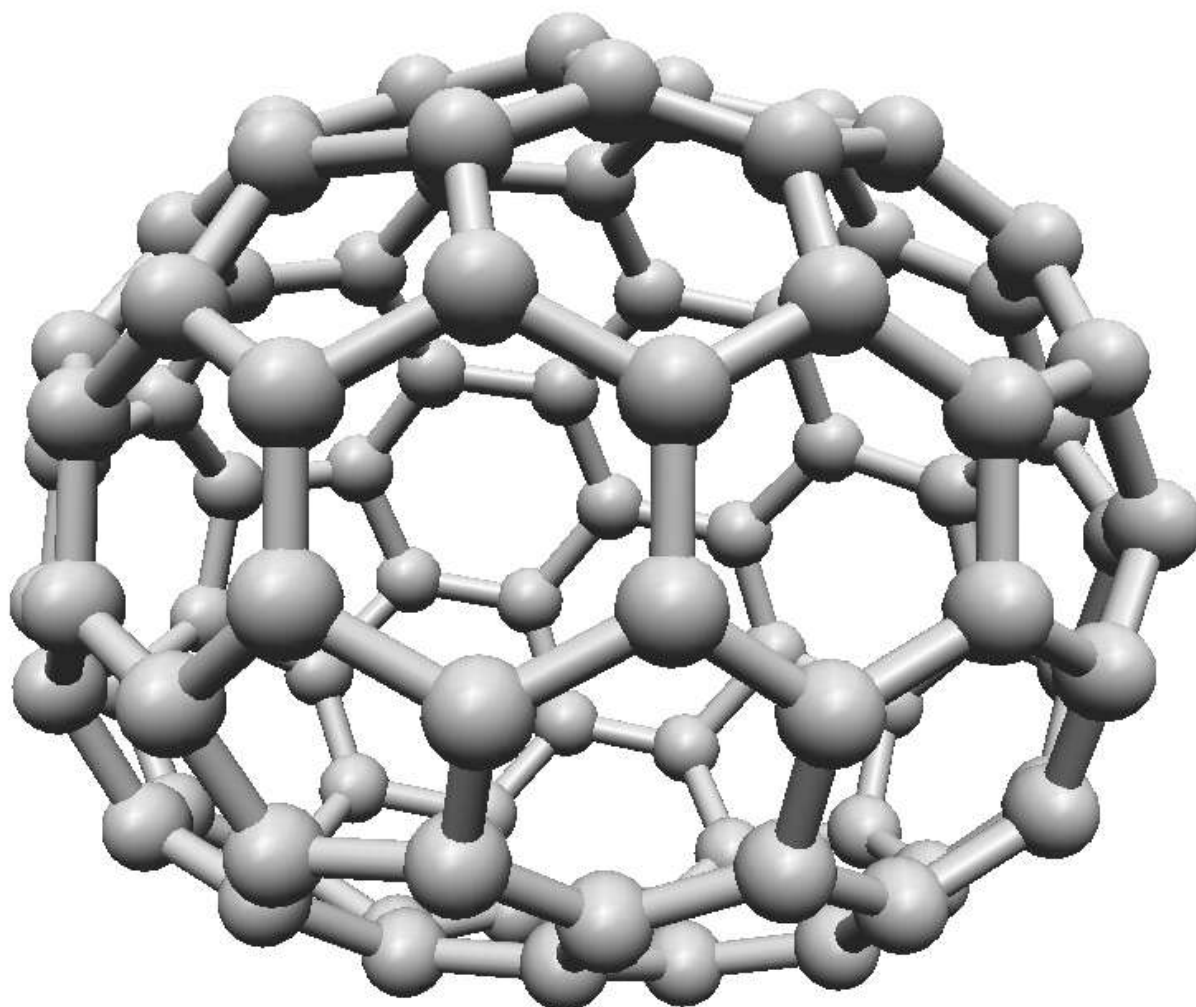
C70 (*C70-D5h*)



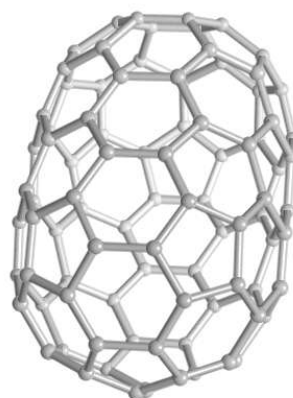
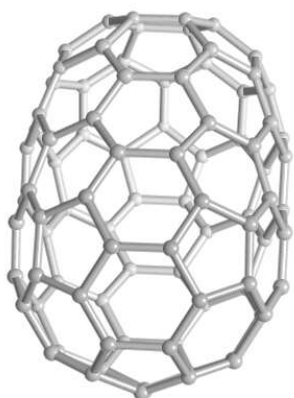
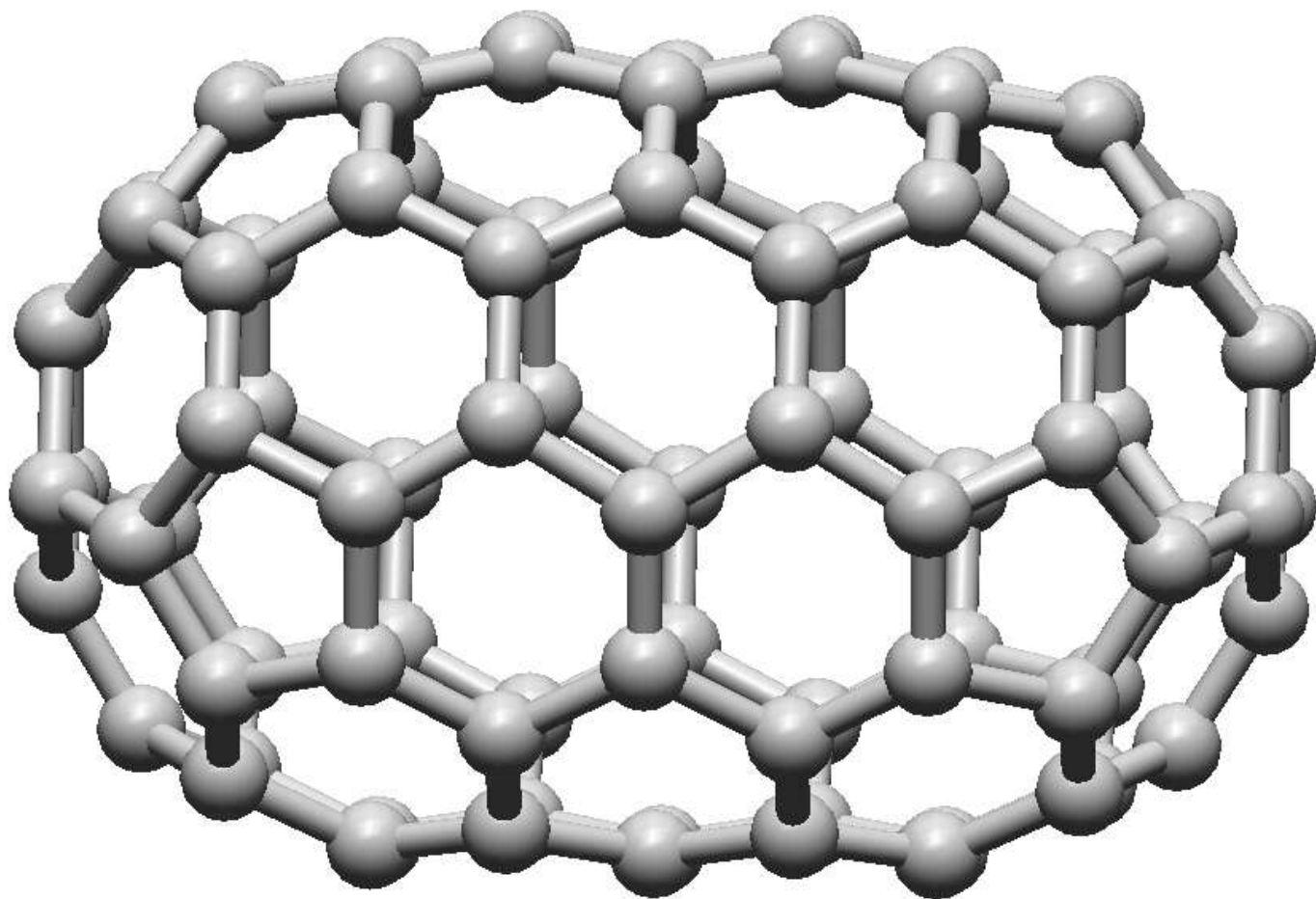
C80 (No.1-D5d)



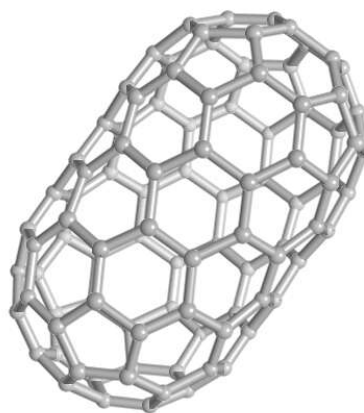
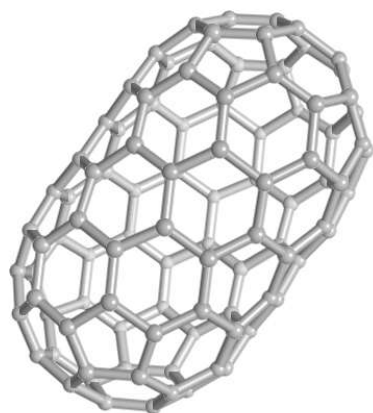
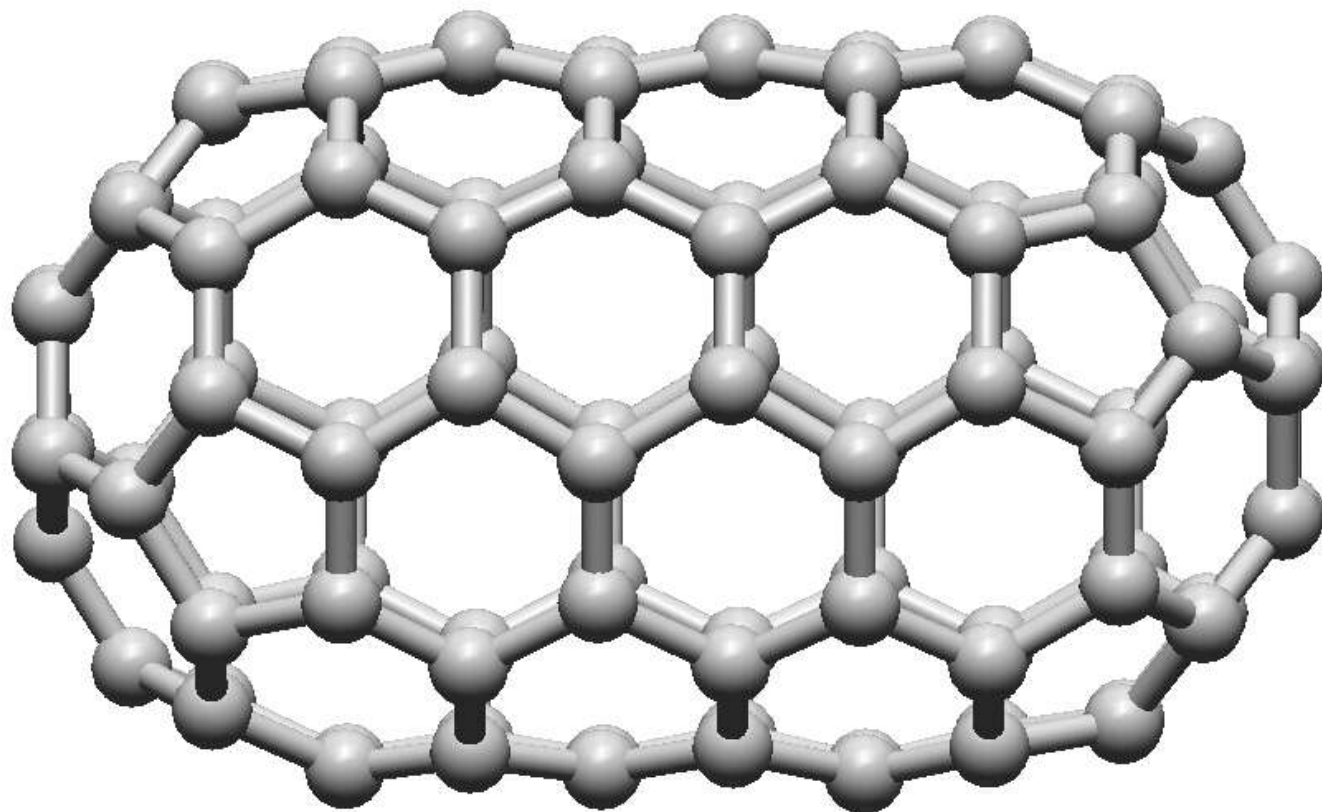
C86 (No.1-C1)



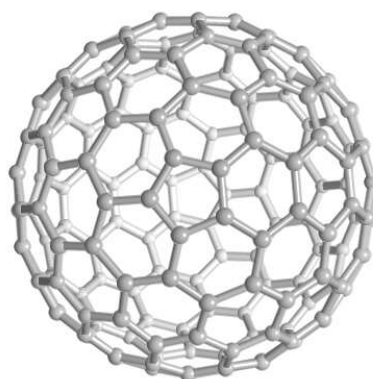
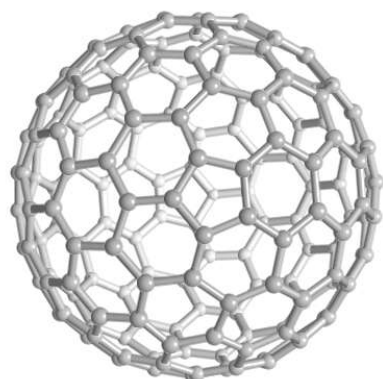
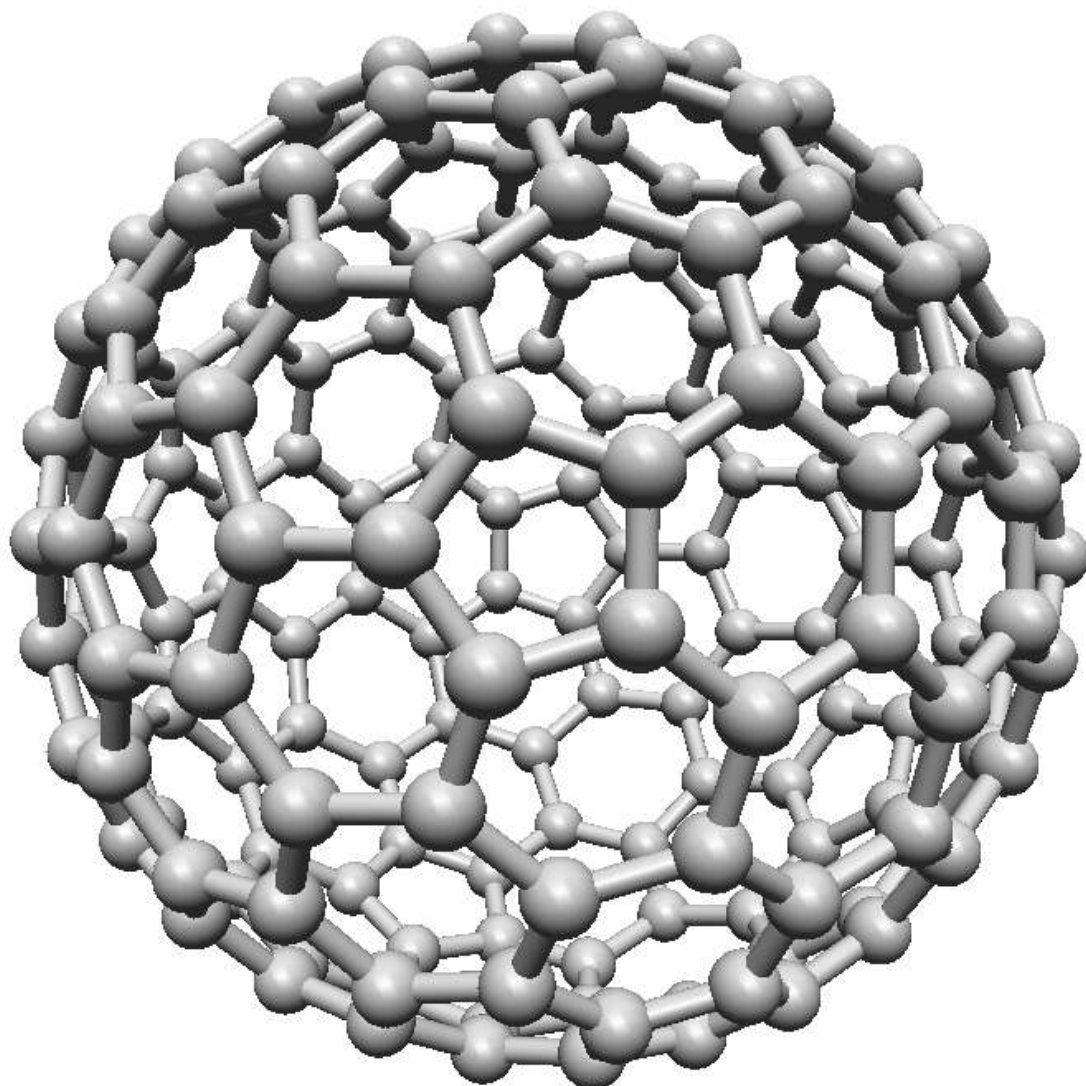
C90 (No.1-D5h)



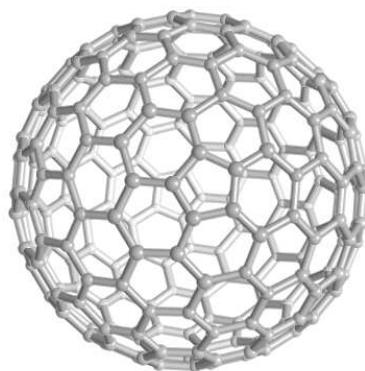
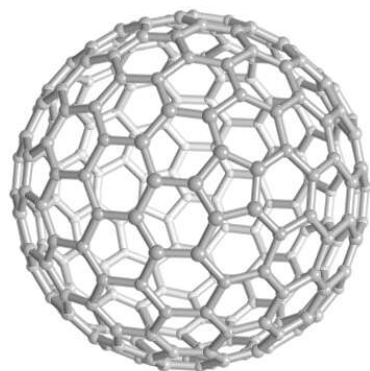
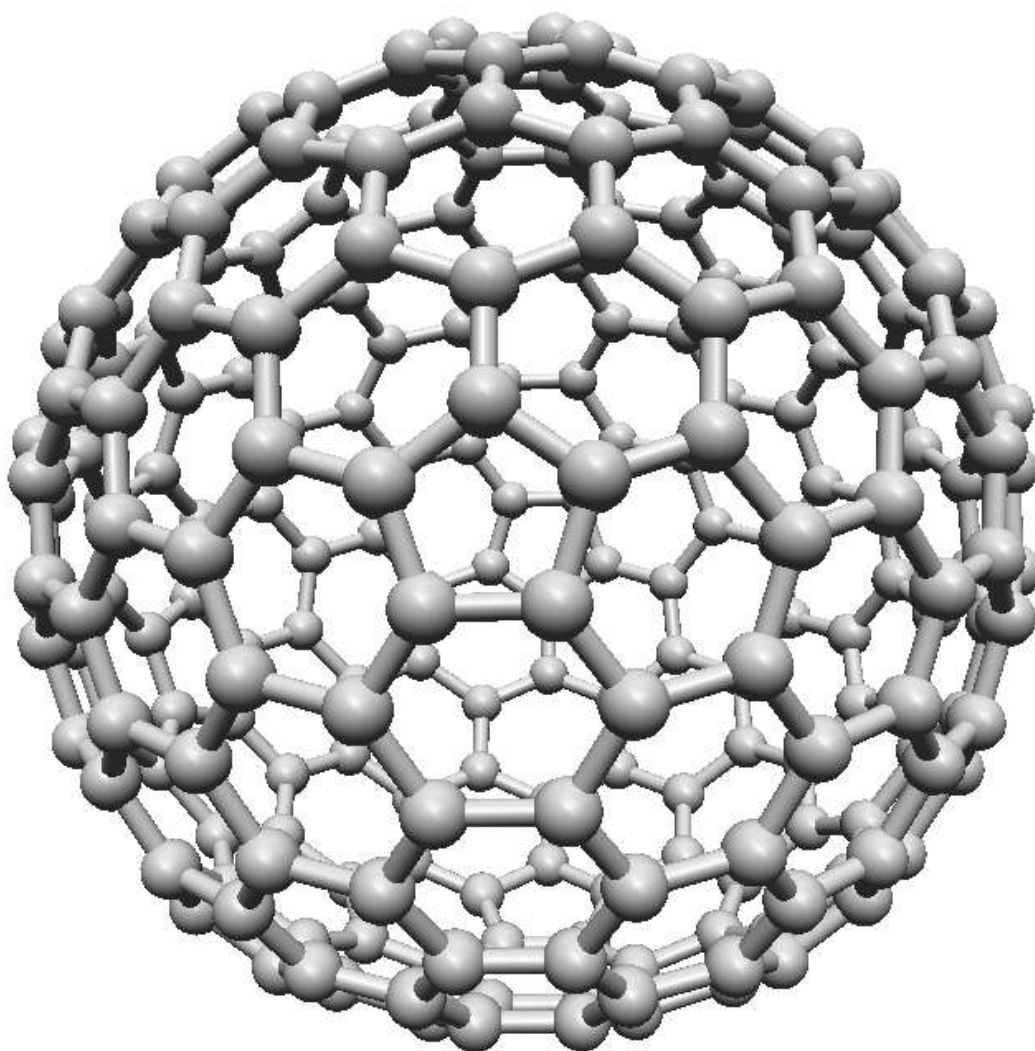
C100 (No.1-D5d)



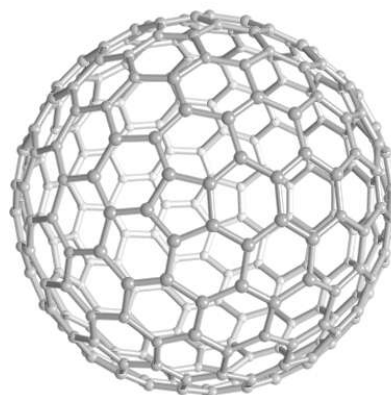
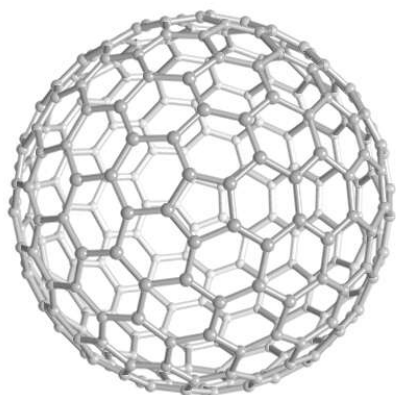
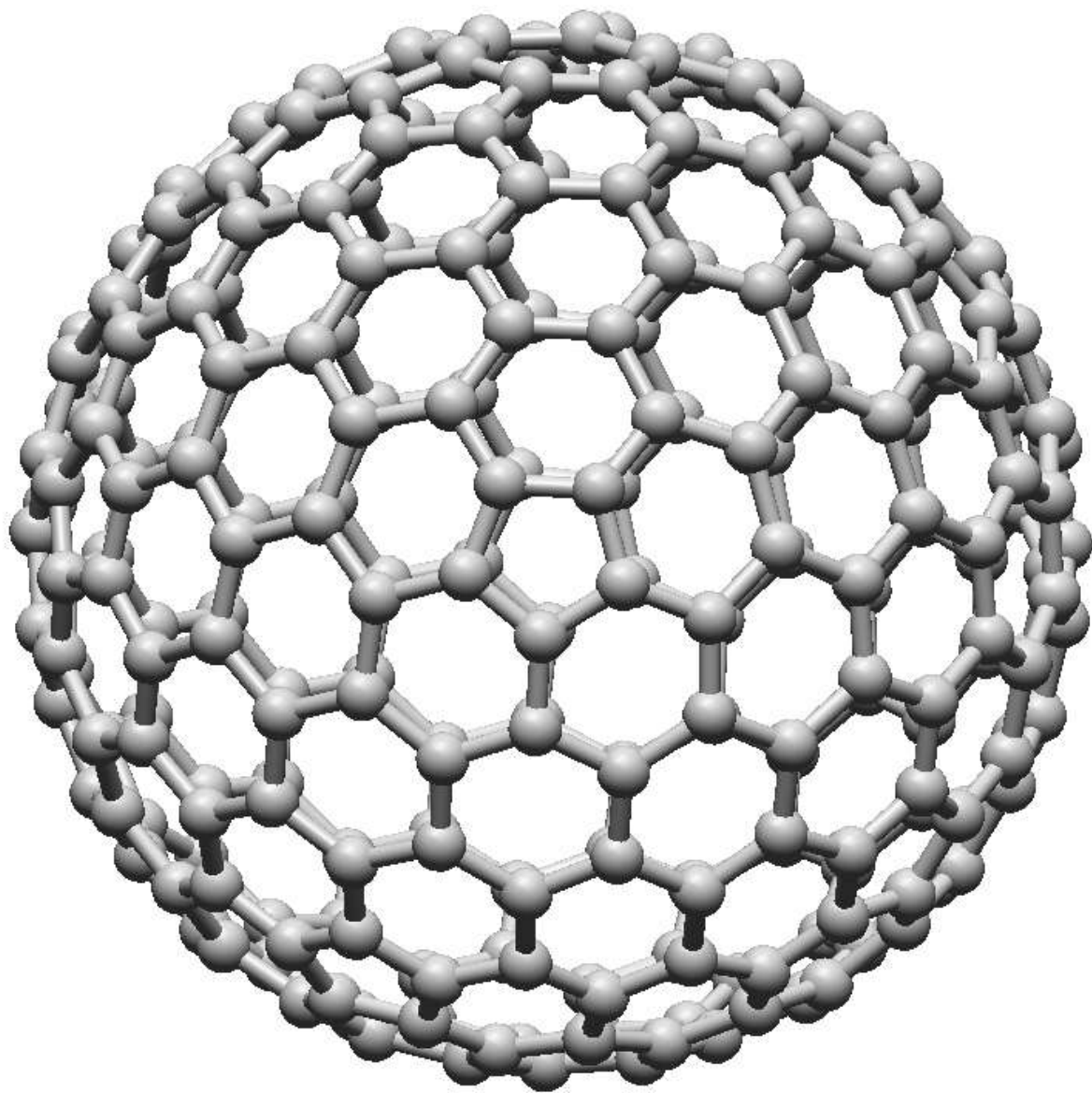
C180



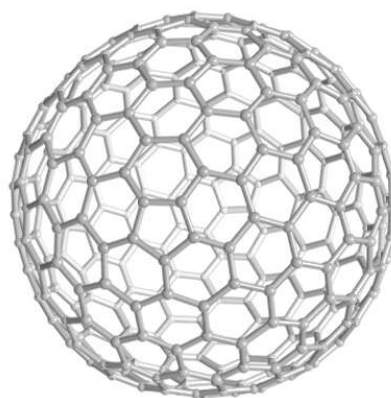
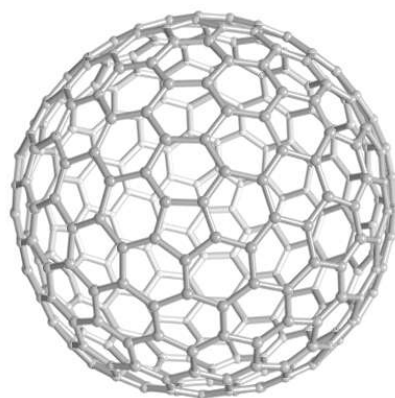
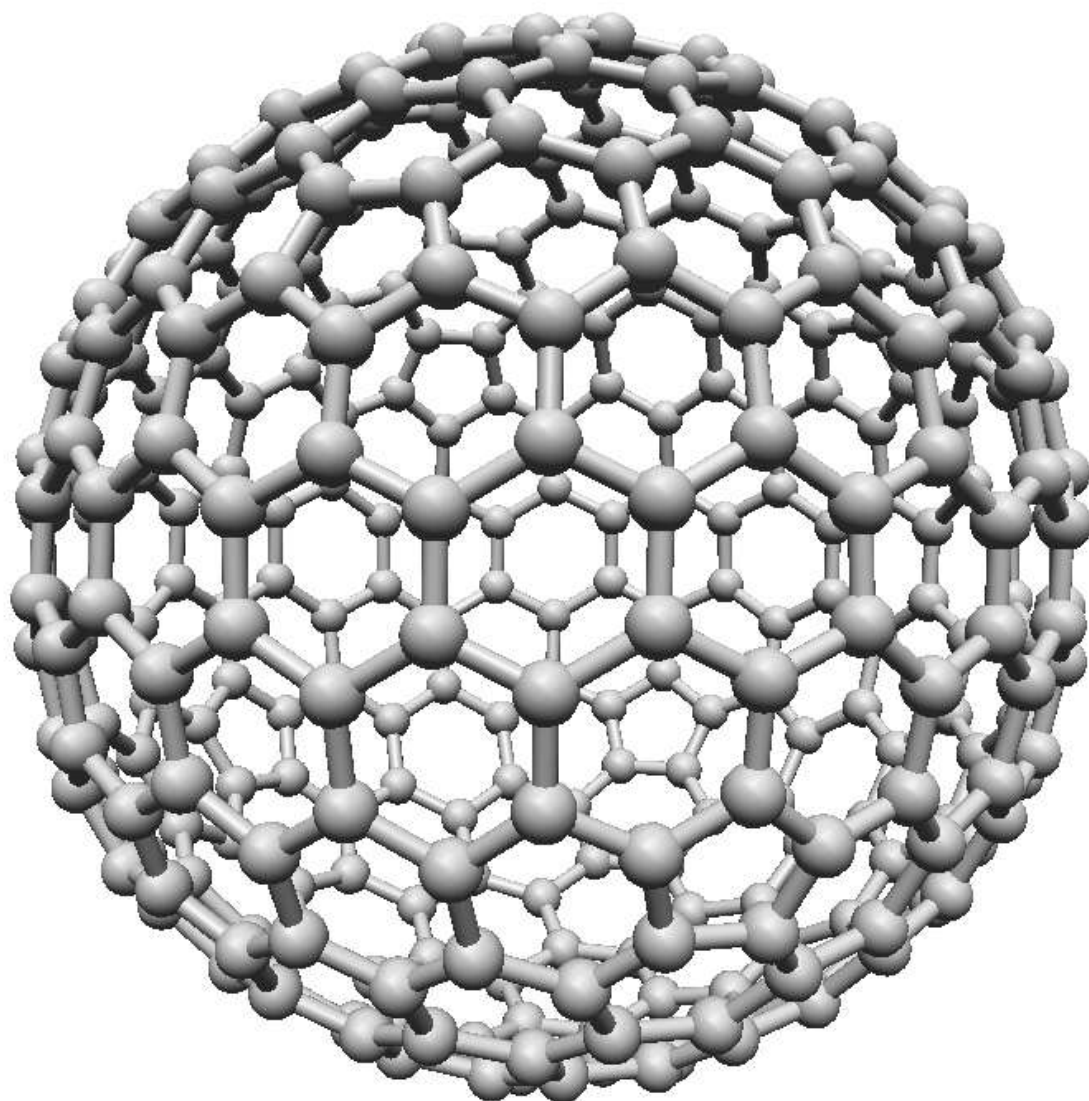
C240



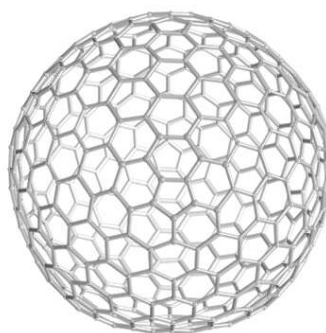
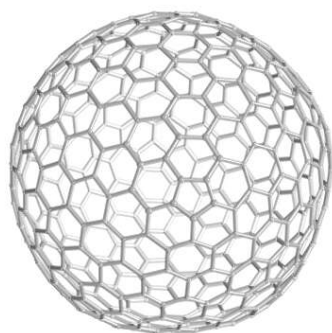
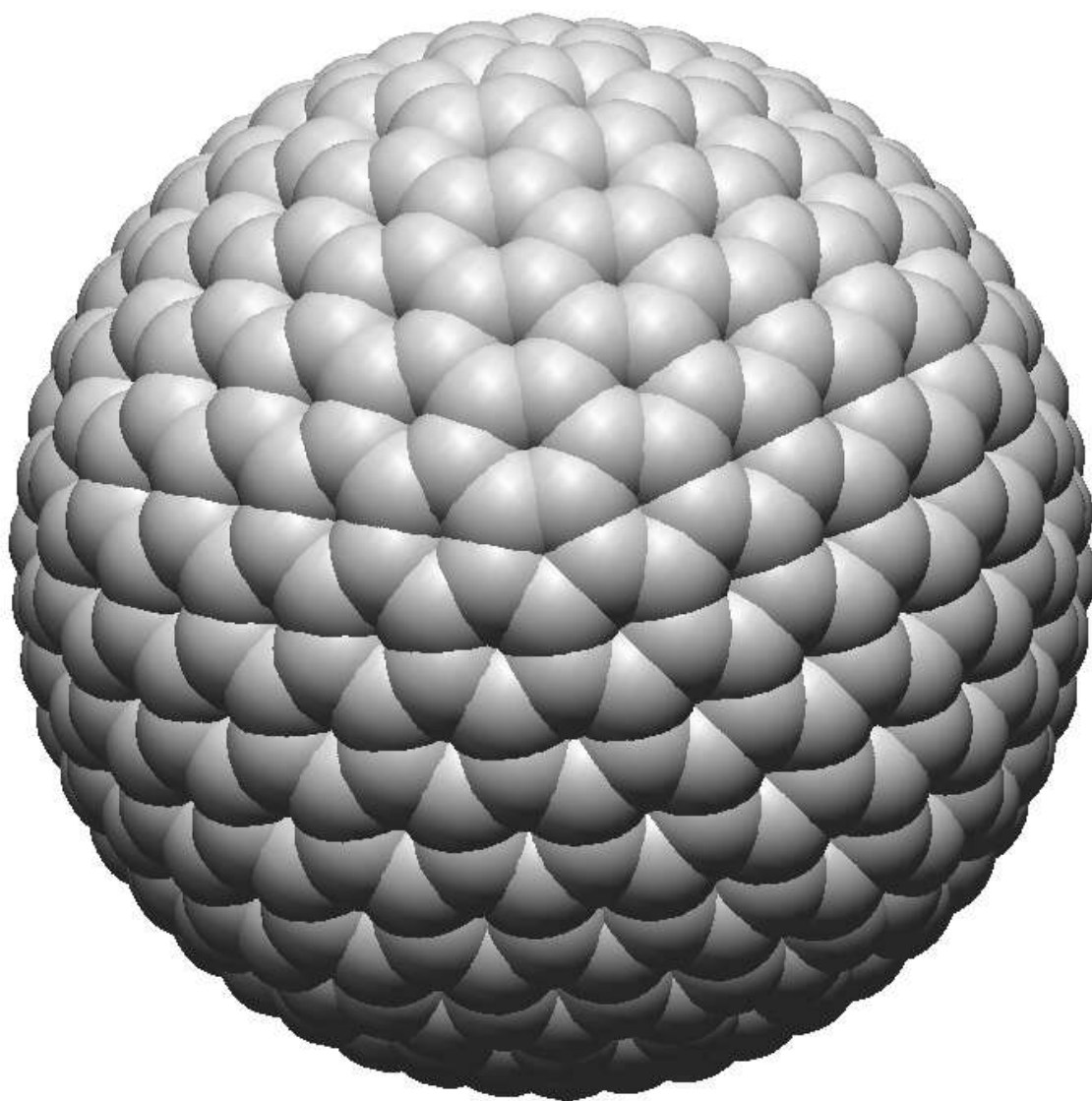
C260



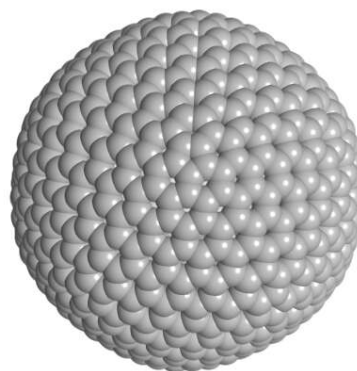
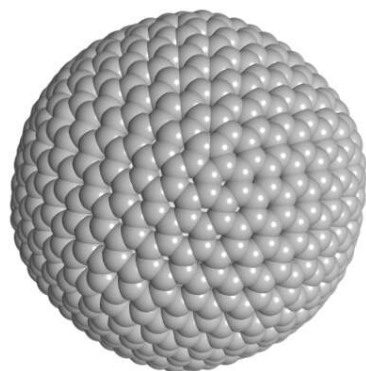
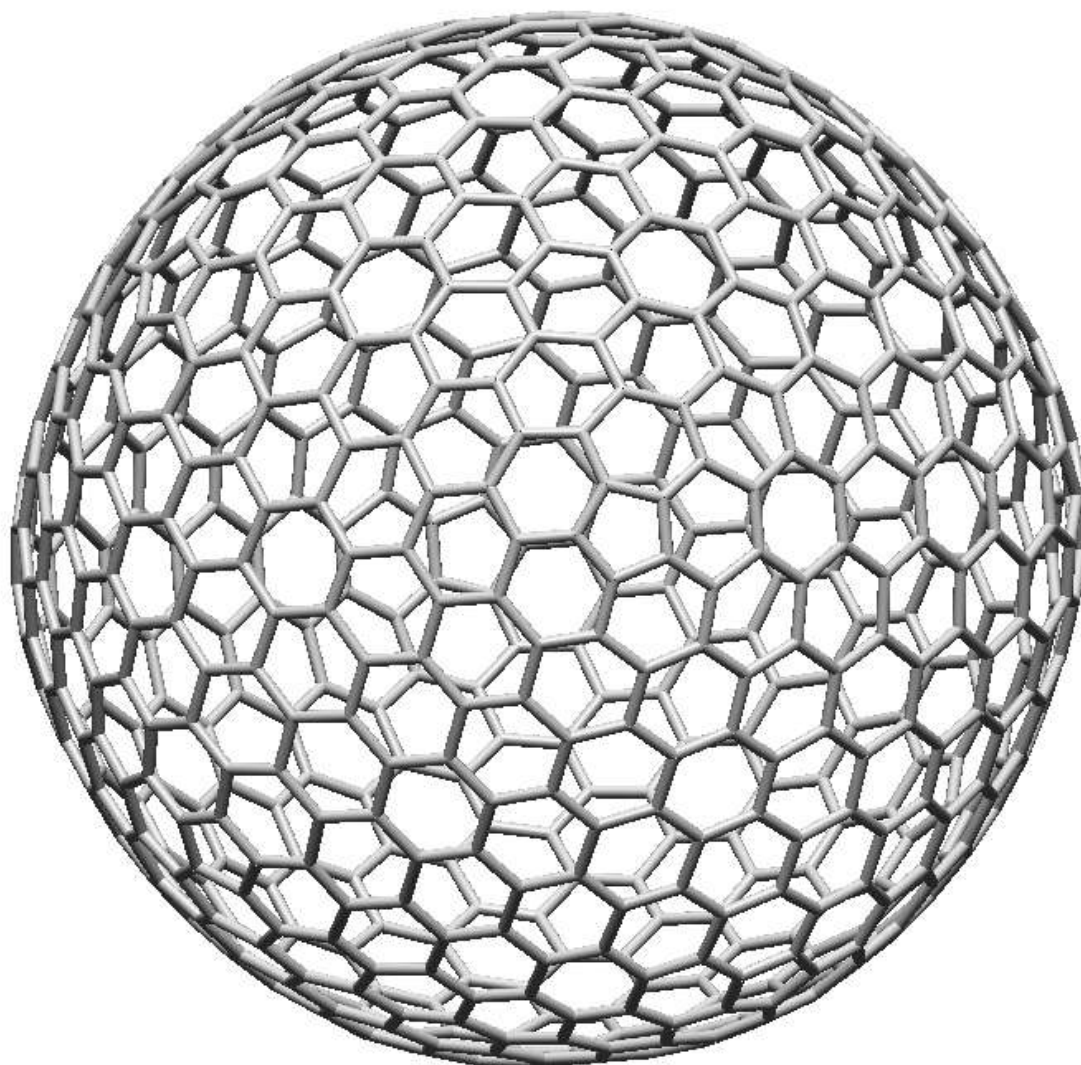
C320



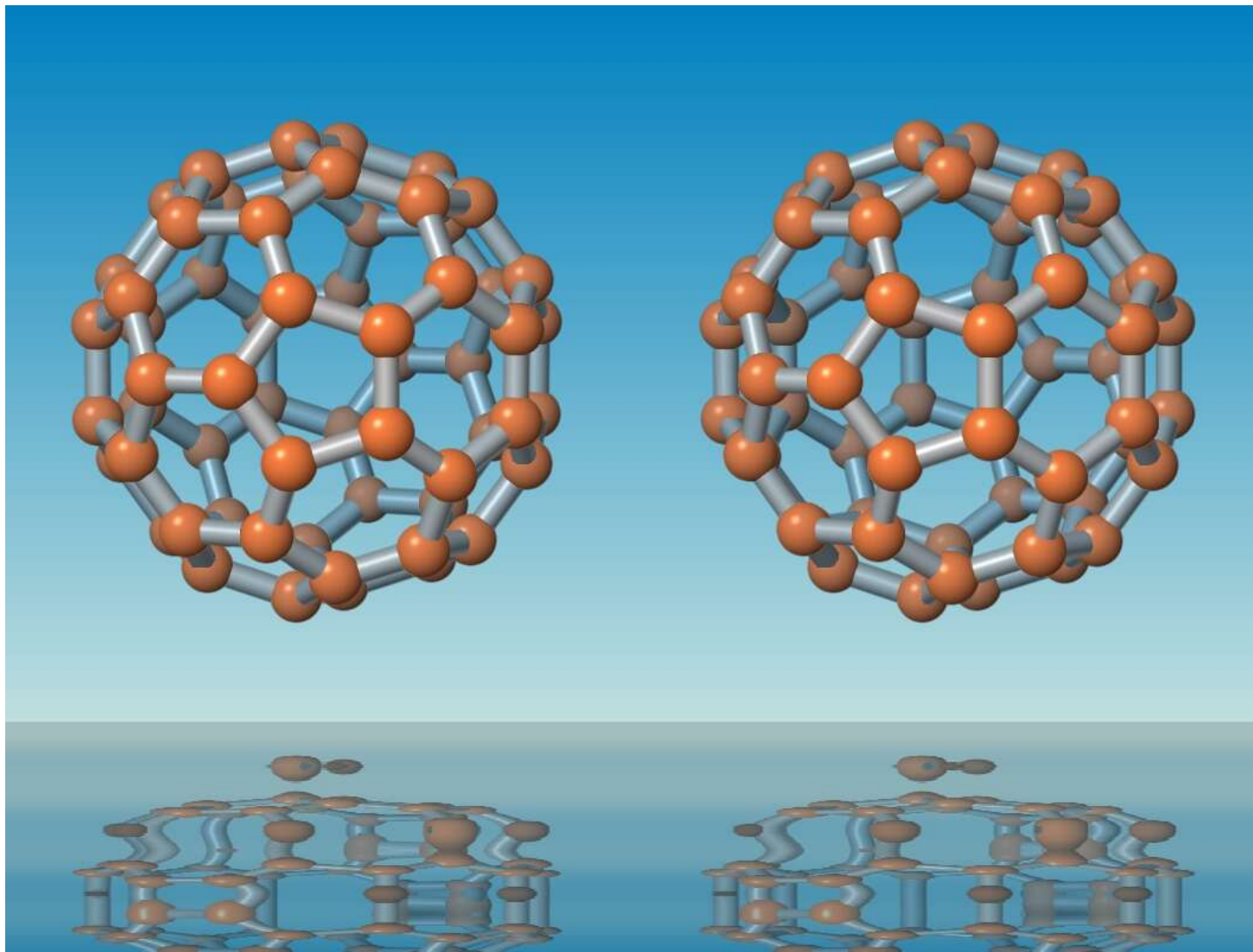
C500



C720

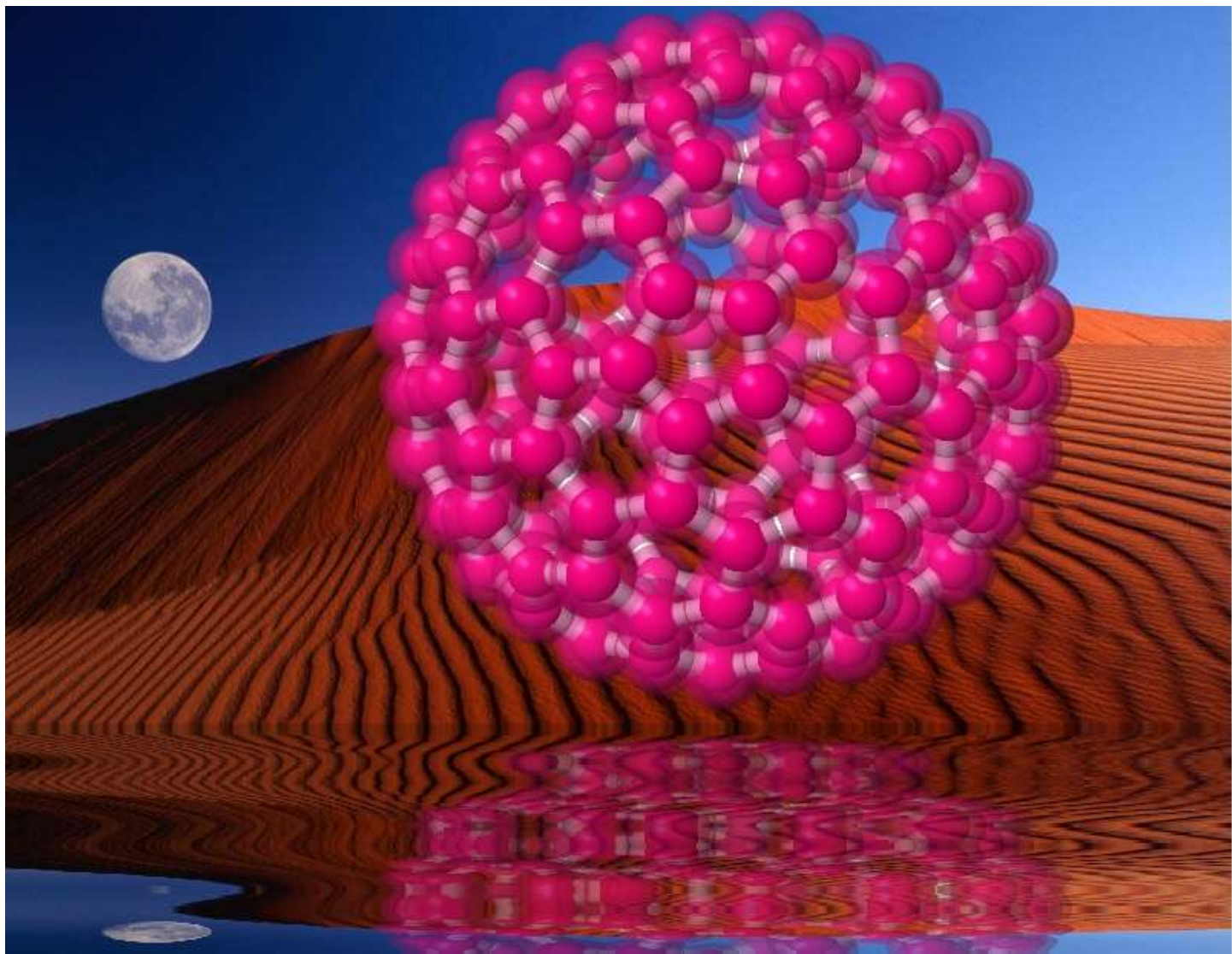


C60 Stereo Pair



This image was created with JPOWD by MDI (www.materialsdata.com).
This lake effect is just one of ten image effects which are available in this software package.

C180



This image was created with JPOWD by MDI (www.materialsdata.com).
The lake effect was combined with a background image.

Disclaimer

If you think you found mistakes in any of the images displayed in this volume please let me know so I can fix it. Please feel also free to contact me with suggestions for improvements and additions to these picture books. An older gallery of mine about fullerenes can be seen at www.jcrystal.com/steffenweber/gallery/Fullerenes/Fullerenes.html

You may contact me via email at: *steffenweber@comcast.net*

- This Volume Ends Here -
